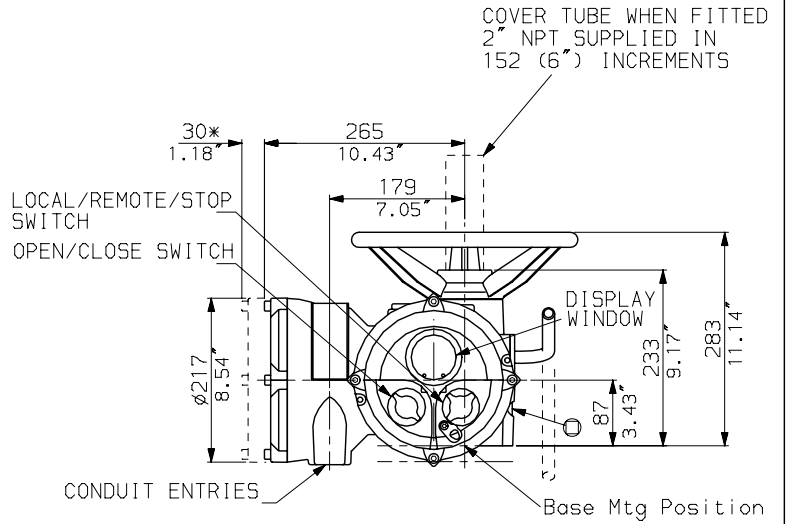
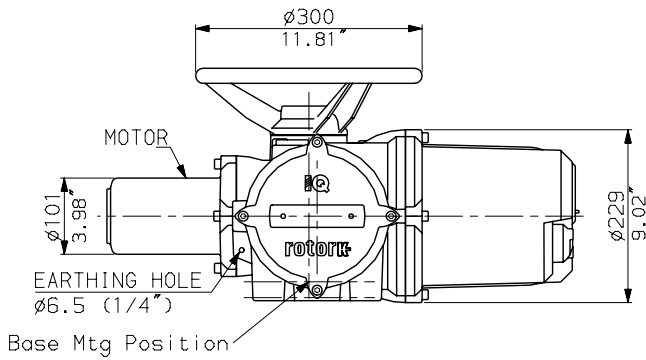
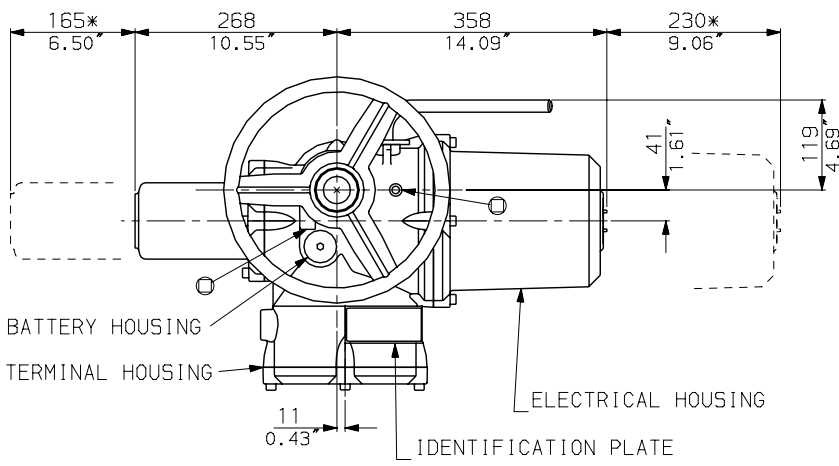
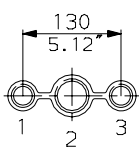


IQ10-18 WITH
STANDARD HANDWHEEL



CONDUIT ENTRIES



Nos.1 & 3 TAPPED 1" NPT
No.2 TAPPED 1 1/2" NPT
STANDARD ALTERNATIVES IF SPECIFIED
2 X M25, 1 X M40
2 X PG16, 1 X PG29

NOTES

Three BASE options are detailed to suit the relevant Coupling arrangement. The required BASE for the SIDE & END views should be loaded to position indicated. (The B4 base cannot be seen due to the conduit entries).

rotork

IQ10 (THW) DATA

Date 140605

Scale 1:10